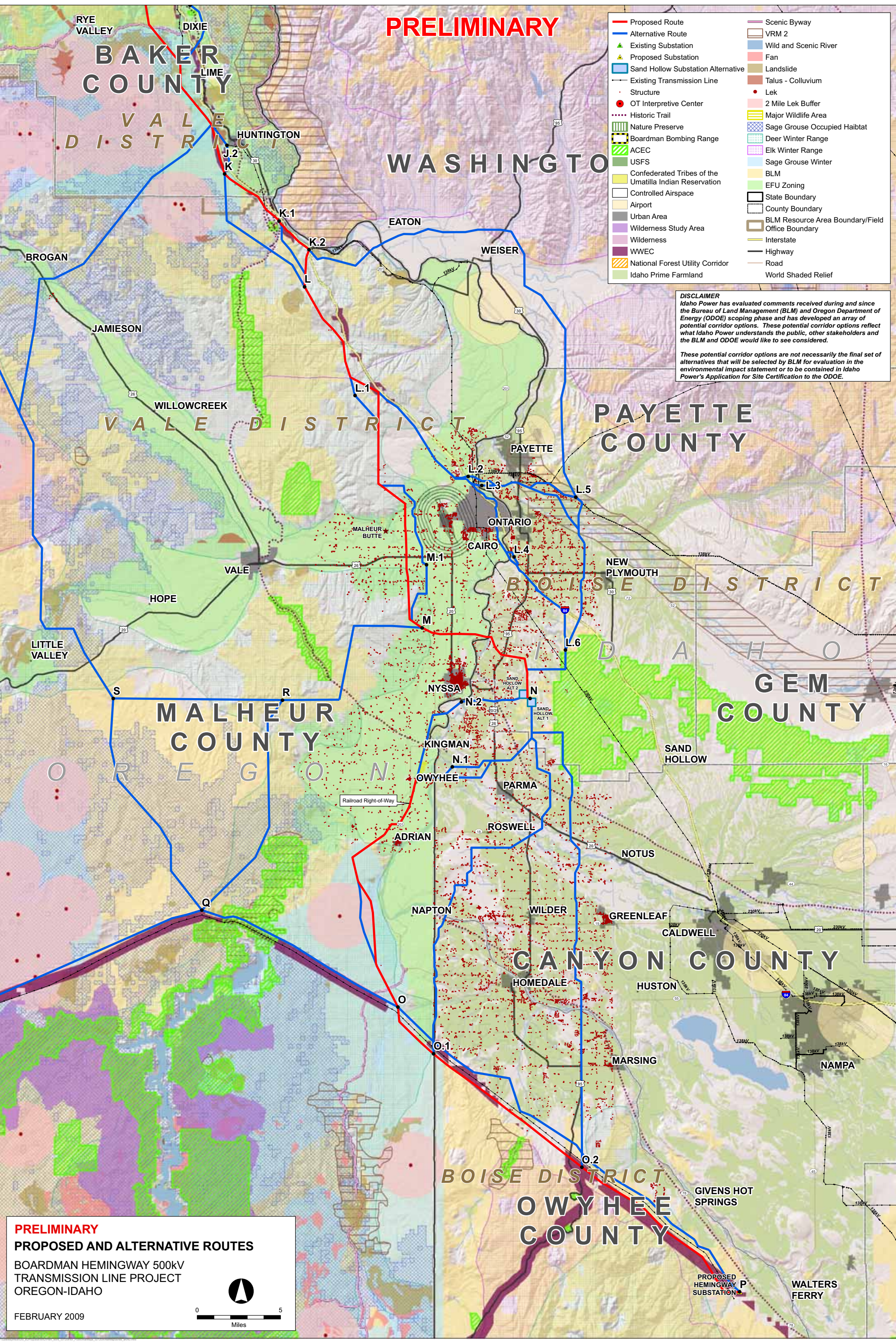


PRELIMINARY

- | | |
|--|--|
| Proposed Route | Scenic Byway |
| Alternative Route | VRM 2 |
| Existing Substation | Wild and Scenic River |
| Proposed Substation | Fan |
| Sand Hollow Substation Alternative | Landslide |
| Existing Transmission Line | Talus - Colluvium |
| Structure | Lek |
| OT Interpretive Center | 2 Mile Lek Buffer |
| Historic Trail | Major Wildlife Area |
| Nature Preserve | Sage Grouse Occupied Habitat |
| Boardman Bombing Range | Deer Winter Range |
| ACEC | Elk Winter Range |
| USFS | Sage Grouse Winter |
| Confederated Tribes of the Umatilla Indian Reservation | BLM |
| Controlled Airspace | EFU Zoning |
| Airport | State Boundary |
| Wilderness Study Area | County Boundary |
| Wilderness | BLM Resource Area Boundary/Field Office Boundary |
| WWEC | Interstate |
| National Forest Utility Corridor | Highway |
| Idaho Prime Farmland | Road |
| | World Shaded Relief |

DISCLAIMER
 Idaho Power has evaluated comments received during and since the Bureau of Land Management (BLM) and Oregon Department of Energy (ODOE) scoping phase and has developed an array of potential corridor options. These potential corridor options reflect what Idaho Power understands the public, other stakeholders and the BLM and ODOE would like to see considered.

These potential corridor options are not necessarily the final set of alternatives that will be selected by BLM for evaluation in the environmental impact statement or to be contained in Idaho Power's Application for Site Certification to the ODOE.



PRELIMINARY
PROPOSED AND ALTERNATIVE ROUTES
 BOARDMAN HEMINGWAY 500kV
 TRANSMISSION LINE PROJECT
 OREGON-IDAHO

FEBRUARY 2009